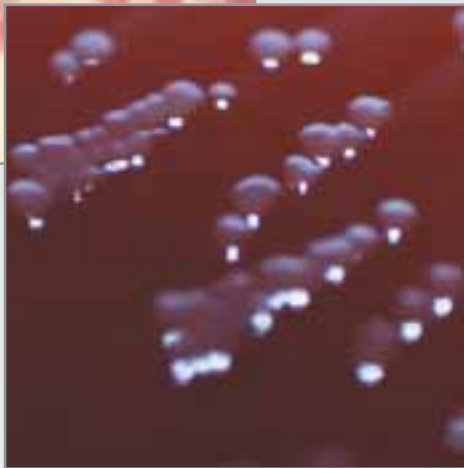
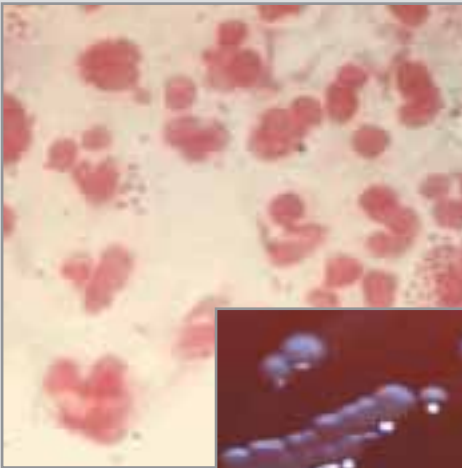


# NEISSERIA IDENTIFICATION



- **Quick**  
Test results in 4 hours
- **Reliable**  
Reliable identification
- **Easy**  
Simple to perform  
and read
- **Cost saving**  
No expensive  
equipment needed



Minibact-N is a rapid alternative to conventional *Neisseria* identification methods.

A reaction time of 4 hours offers laboratories a reduction in identification time and costs compared with conventional systems.

SSI Diagnostica  
2 Herredsvejen  
3400 Hillerød  
Denmark

Tel: +45 4829 9100  
Fax: +45 4829 9179  
info@ssidiagnostica.com  
www.ssidiagnostica.com

## Description

Minibact-N is designed to distinguish between

*N. gonorrhoeae*  
*N. meningitidis*  
*N. lactamica* and  
*M. catarrhalis*

The remaining members of the genus *Neisseria* are identified as *Neisseria* species. Entirely negative test results are indicative of *N. cinerea*.

## The test includes the demonstration of:

$\beta$ -lactamase  
 $\beta$ -galactosidase  
 $\gamma$ -glutamylaminopeptidase  
 Polysaccharase  
 Tributyrinesterase  
 Utilization of Glucose, Maltose, and Saccharose.

One kit contains sufficient material for the identification of 12 strains.

## Principle

Since the technique is based on the detection of preformed enzymes, identification is possible in 4 hours.

Test results are read as changes in colour. The results can be read by naked eye

## Limitations

The method requires an 18-24 hour pure culture of oxidase-positive Gram-negative diplococci (*Neisseria* species or *Moraxella catarrhalis*).

## Shelf life and storage

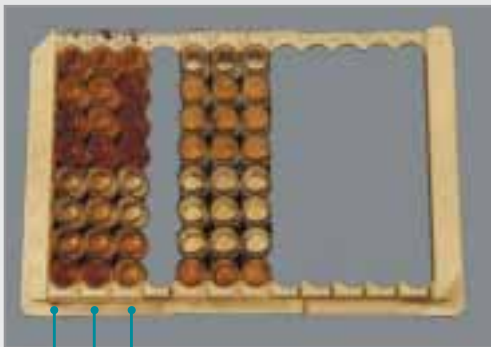
Expiry date is indicated on the label. Store at 2-8°C

## Available products

1 Minibact-N kit, 12 identifications. cat. no. 910

## Ordering and Information

Tel: +45 4829 9100 Fax: +45 4829 9179  
 info@ssidiagnostica.com



*Moraxella catarrhalis*

*Neisseria meningitidis*

*Neisseria gonorrhoeae*

Identification table		Positive reaction		Negative reaction		<i>N. gonorrhoeae</i>		<i>N. meningitidis</i>		<i>N. lactamica</i>		<i>N. species</i>		<i>Moraxella catarrhalis</i>	
Well	Test														
A	$\beta$ -lactamase	Red	Yellow	v	-	-	v	v							
B	Glucose	Yellow	Red	+	+	+	v	-							
C	Maltose	Yellow	Red	-	+	+	v	-							
D	Saccharose	Yellow	Red	-	-	-	v	-							
E	$\beta$ -galactosidase	Yellow	White	-	-	+	-	-							
F	$\gamma$ -glutamylaminopeptidase	Pale Yellow or Yellow	White	-	+	-	v	-							
G	Polysaccharase	* Black-brown	Pale Yellow	-	-	-	*+	-							
H	Tributyrinesterase	Yellow	Red	-	-	-	-	+							

\*+: *N. cinerea* negative and *N. subflava* variable. Exclusively negative test results are indicative of *N. cinerea*.

\*Blackbrown: The colour might fade rapidly

## References

- Berthelsen, L. - Minibact-N trail run. Mikrobiologi, a newsletter from Statens Serum Institut, No. 21. 1990. Only available in Danish.
- Ison, C.A. et al. - Evaluation of a new rapid identification kit for *Neisseria* spp. and *Noraxella catarrhalis*. 11th Meeting of the International Society for STD Research, New Orleans, Louisiana, USA 1995.
- Lewis D.A. - identification of *Neisseria gonorrhoeae* from clinical specimens. 11th Meeting of the International Society for STD Research, New Orleans, Louisiana, USA 1995.