

# IMMUVIEW<sup>®</sup>

*S. pneumoniae* and  
*L. pneumophila*  
Urinary Antigen Test

## FOR URINE AND CSF SAMPLES

ImmuView<sup>®</sup> *S. pneumoniae* and *L. pneumophila* Antigen Test is the one rapid test that detects pneumococcus and *Legionella* with higher sensitivity and specificity and offers broader detection of *L. pneumophila* serogroup 1 and non-serogroup 1 to the benefit of patients.

ImmuView<sup>®</sup> is based on SSI Diagnostica's long tradition of premium quality antibody production.

SSI Diagnostica A/S  
Herredsvejen 2  
3400 Hillerød  
Denmark  
T +45 4829 9100

[ssidiagnostica.com](http://ssidiagnostica.com)

## DESCRIPTION

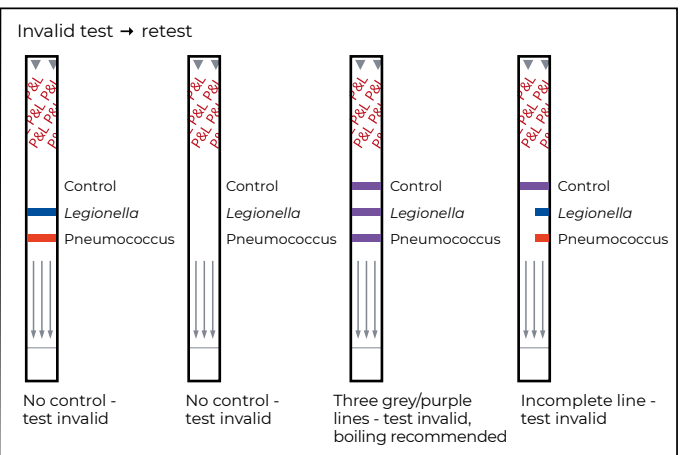
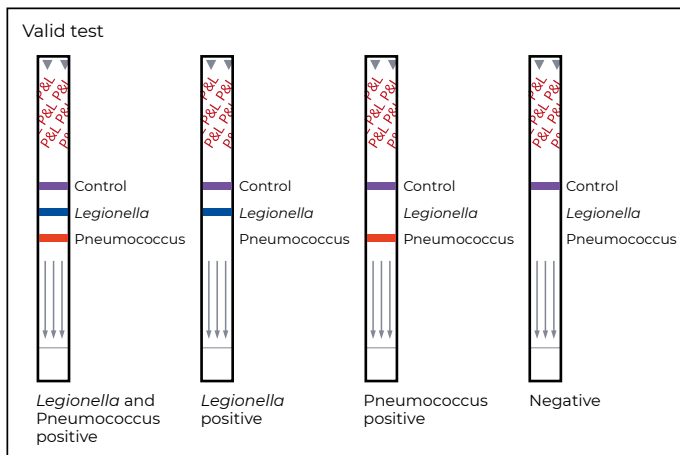
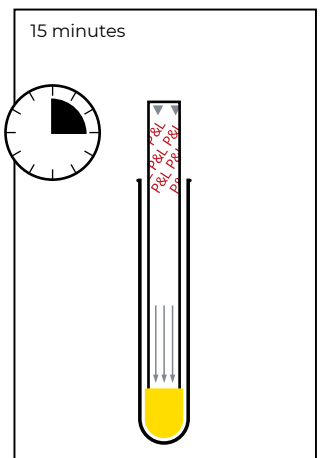
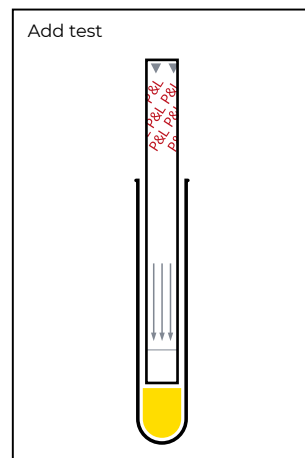
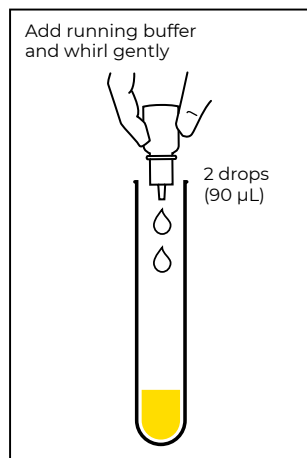
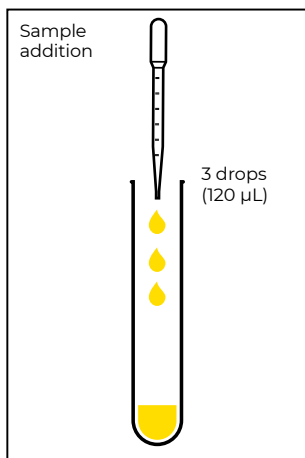
ImmuView® *S. pneumoniae* and *L. pneumophila* Antigen Test makes it possible to readily distinguish between *S. pneumoniae* and *L. pneumophila* in patients with presumed pneumococcal pneumonia and *Legionella* infection (Legionaire's disease) and thereby allows clinicians to initiate the correct antibiotic treatment to improve the outcome for the patient. *S. pneumoniae* is the leading cause of community-acquired pneumonia and *L. pneumophila* causes costly hospital and ICU admissions. It is difficult to clinically distinguish between the two bacteria. Due to different treatment of the diseases, guidelines recommend double testing<sup>1,2</sup>.

## THE FIRST OF ITS KIND

ImmuView® *S. pneumoniae* and *L. pneumophila* Antigen Test is the first of its kind to provide diagnostics for both *S. pneumoniae* and *L. pneumophila* in one test.

### Improve your diagnostics with ImmuView® *S. pneumoniae* and *L. pneumophila* Antigen Test and benefit from several factors:

- Rapid and simple detection of both pneumococcus and *Legionella* in one test
- Initiate the correct antibiotic treatment to improve patient outcome
- Higher sensitivity and specificity
- Broader detection of *L. pneumophila* serogroup 1 and non-serogroup 1
- Testing for *S. pneumoniae* and *L. pneumophila* is recommended in guidelines in several countries<sup>1,2</sup>.
- Results in 15 minutes



## SENSITIVITY & SPECIFICITY

### Urine samples:

The clinical sensitivity and specificity were obtained by testing retrospective urine samples.

Urine	ImmuView® Sensitivity	Other Rapid Tests Sensitivity
<i>S. pneumoniae</i>	85% (60/71)	78% (55/71)
<i>L. pneumophila</i> SGI	89% (88/99)	72% (71/99)
Combined	73% (161/220)	58% (127/220)
<i>L. pneumophila</i> non-SGI	26% (13/50)	2% (1/50)

Specificity of *L. pneumophila* was 100% (0/76) and *S. pneumoniae* was 99% (1/76)<sup>3</sup>.

### Cerebral fluid (CSF) samples:

Sensitivity was tested with culture positive samples and spiked samples. Specificity was tested with culture positive samples for other bacteria, culture negative and donor samples.

CSF	ImmuView® Sensitivity	ImmuView® Specificity
<i>S. pneumoniae</i>	100% (27/27)	100% (205/205)

The specificity of *L. pneumophila* was 100% (0/205). The sensitivity was not examined.

## PRODUCT DETAILS

ImmuView® *S. pneumoniae* and *L. pneumophila* Antigen Test, Article No. 95389. Kit Size: 22 tests.

## REFERENCES

1. NICE National Institute for Health and Care Excellence. Pneumonia in adults: diagnosis and Management. [www.nice.org.uk/guidance/cg191](http://www.nice.org.uk/guidance/cg191) (published December 3, 2014).
2. R. Menéndez et al. Community Acquired Pneumonia. New Guidelines of the Spanish Society of Chest Diseases and Thoracic Surgery (SEPAR). Arch Bronconeumol. 2010;46(10):543-558
3. C. S. Jørgensen, S. A. Uldum, J. F. Sørensen, I. C. Skovsted, S. Otte, and P. L. Elverdal. Evaluation of a new lateral flow test for detection of Streptococcus pneumoniae and Legionella pneumophila urinary antigen. Journal of Microbiological Methods 116 (2015) 33-36.